

*Anne Bartholow, Director of
Senior Adult Ministries*
(816) 741-2972 ext 202
annebartholow@plattewoodschurch.org
Platte Woods UMC
7310 NW Prairie View Road
Platte Woods, MO 64151



Volume 6, Issue 10

Thoughts From Anne ...

What happens on the ship stays on the ship! With giggles and huge smiles this is what we all said as we flew to San Juan, Puerto Rico.

Fellowship was the theme. Seeing each other through a rainbow of colors. Our intention was not only to learn more about each other but to learn about those God has put in our paths.

One of our first encounters happened at breakfast in San Juan, a mother of two beautiful little girls sat down next to me in the restaurant just down from our hotel. I started a conversation with her as she appeared to be overly stressed trying to take care of her little ones only to discover her family had lost everything in Hurricane Irma days before in St. Thomas. She was on her way to Oregon to live with her parents until things could be worked out. Her husband was staying behind to help others. I prayed with her and told her we would continue to pray for her. She thanked me but she wanted prayer for the others in her country that had no place to go. We both knew God had put us together for His Purpose.

Walking right in front of us on the ship was a man we knew from home. An Emmaus friend. We had not seen him and his wife for probably three or more years. We met with them a few days later to review each other's lives. We agreed to meet in the future and to keep a relationship going. We both knew God had put us together for His Good!

We met a man and his wife that also came with a Christian group. We shared stories of our churches and reminded each other of our missions. On the last day as things developed, those of us that left were responsible for getting our luggage off the ship. The ship usually takes care of this under normal situations. Some of us needed help and here was this man and his wife at six in the morning to help. We knew God had put us together to continue His Mission!

I could go on and on with the circumstances we shared with God's people during this trip and how we knew of His Presents. However, there is only one more story I must share.

One of us met someone on the elevator on ship that was frightened and extremely sad. She was from Mexico and did not know about her family with the earthquake. She was scared that this was the end of our Earth. So many disasters. Our friend, without a blink of her eye, shared with this lady about her faith. She told her to let Jesus in her heart and to tell her family and friends to let Jesus in their hearts and they would have peace. The light came into this lady and even surprised us. After a few minutes, she left with a smile on her face and what seemed like an immediate peace to go share with her friends and family. I know when I was told this story, God was Active in all of us.

What happens on the ship must be told. It must not be kept on the ship!

*"He died for us so that, whether we are awake or asleep,
we may live together with him. Therefore encourage one another
and build each other up, just as in fact you are doing."*

1 Thessalonians 5:10-11

Blessings,
Anne

Dates to Remember...

October 2017



- 5 Embark Begins
- 12 Farmer's House
- 15 Brunch Out Bunch
- 17 Retirees' Luncheon
- 19 Fellowship Lunch & Games
- 21 Ladies' Day of Renewal
- 26 Farmer's House
- 29 Trunk 'R Treat

SAM Singers: Tuesdays, 2 pm

*Over 50s Senior Aerobics:
M*W*F, 9 am, room 210*

*Prayer Shawl Ministry: Monday
nights at 6:30 & Wednesday
mornings at 10 am*

Bingo: Wednesdays, 3:30 pm

Mah Jongg: Tuesdays, 1-4 pm

Organ Class: Thursdays, 11:15 am

Bridge: Mondays, 5 pm

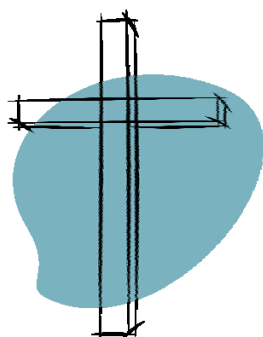
*Pickle Ball: Tuesdays,
Wednesdays, Thursdays, 3:15 pm*

Golf: Thursdays, 4:30 pm



Mission: Making new disciples of Jesus Christ for the transformation of the world.

Vision: Leading people to follow Jesus!



Here's what
is going on
with SAM ...

Brunch Out Bunch

Come join us for lunch on October 15. Please meet at the front at noon and sit with our group as we wait for the shuttle to pick us up. Thank you to Colleen for finding special places for us to enjoy. Thank you to Connie for taking us to these special restaurants to enjoy each other as we eat a meal together. Please call Prudy Fiant (741-3964) or let Anne know (annebartholow@plattewoodschurch.org) if you plan to join in on this fun time.



Turkey Dinner

The **Annual Turkey Dinner** is scheduled for Saturday, November 11 from 3-7 pm. We will begin having a volunteer signup table Sunday, October 8 before and after services. Please mark your calendars and help us spread the word!



Blankets of Hope

Blankets of Hope meet in room 209 at 9:30 am on the second Tuesday of the month. We are looking for people with a heart of helping others. Please consider joining us to help with this project. Call Patricia Dunn (308-5971) for more details.



Sam Fellowship Luncheon

Plan to come and join us as we enjoy lunch and fellowship on Thursdays, October 5 & 19 at 12:00 noon in the Dining Hall. The lunch is \$5 and consists of soup and a sandwich or maybe a sandwich and a salad. We have a dessert with each lunch. Please plan to stay for Games immediately following.



SAM Games



SAM Games are played directly after the Fellowship Luncheon (see above) in the Studio. We are currently playing Mexican Train. Usually, we start at 1 pm.

Pillowcase Ministry

Pillowcase making is going again on Tuesdays at 2 pm in room 209. We need people to sew, pin, cut, iron and put pillowcases in their bags. There is a job for all that come. You may join us here or if you like you may take the already cut and ready to go pillowcases home. Contact Anne for any questions.



SAM Singers



SAM Singers have resumed practices on Tuesdays at 2 pm in the Music Suite. Please join this group as they take the Word to others through song. They will visit retirement and nursing homes in the area. Start now and you can be a part of the Christmas programs. All are welcome and there is no audition. Call Ray Hurt, director (471-2531), with questions.

Mah Jongg

Come and enjoy an afternoon of Mah Jongg. We meet in room 257 at 1 pm on Tuesdays. Bring a friend and learn together. It is so nice to have everyone together and to stimulate your brain, too!



Care Night



These ministries are designed to provide special care to those who need support. Groups meet on Thursday evenings from 6:30-8:00. For

info about fall groups, contact Vicki (vkrehbiel@plattewoodschurch.org).

Hope & Healing Support

This is an open, ongoing support group led by Stephanie Womack, Counseling intern. The group is designed to be a space where spiritual and emotional healing are a priority.

Finding Time for Stress Relief

Discover fun and innovative ideas on how to relieve stress in your life. No cost. Workbooks are provided.

Grief Support Group

Whatever the loss, Colleen Van Nostran and Adele Huff (your healing companions) are prepared to listen.

Register at plattewoodschurch.org/care

Threads of Faith Prayer Shawl Ministry



Prayer Shawl members are wonderful servants of the Lord who meet on Mondays at 6:30 pm and on Wednesdays at 10 am in room 209. Come to knit or crochet a prayer shawl and fellowship with others. If you have always wanted to learn, this is the time to come. There are many teachers in this group to help those wanting to start a new adventure.

Organ Class

Organ class meets every Thursday at 11:15 am. Come and experience FREE lessons in room 257.



Meet the Pastors



You are invited to have a "get to know you" conversation with your pastors on Sunday, November 5 at noon in the Studio. No need to register, just come!

SAM Golf



Each Thursday between 4:30 and 5:00 (weather permitting) we will be playing golf at Shiloh Springs Golf Course. This is a time of fellowship as well as a time to make new friends. Pray for each other and get those golf clubs ready to go. We have men and women playing. Contact Kim Bartholow (805-4790) or Anne to let us know you are coming. Shiloh has our carts ready and the cost remains \$15.

Retirees



This month the Retirees will meet on Tuesday, October 17. We will be meeting at noon in the Dining Hall. Please bring a dish to complement green bean casserole. Call Anne Bartholow with any questions.



Join in the fun for BINGO on Wednesdays at 3:30 pm in room 209. We laugh a lot and get so excited over the prizes. Come and join us for an afternoon of fun.

Thank you to all who come and play for those fantastic, exciting prizes. See you on Wednesdays.

METHOD

October 4, 11, 18

A 3-week group experiencing the Wesleyan Way. This class will focus on the fundamental ideas that have shaped the Methodist movement. Led by Pastor Steve.



Register now at
[plattewoodschurch.org/
connect](http://plattewoodschurch.org/connect)



Family Worship Sunday

The fifth Sundays of the month are Family Worship Sundays. Sunday morning small groups do not meet for elementary children so they may worship as a family. Kids' worship packets are available.

Embark

October 5, 12, 19, 26

A 4-week group focused on highlighting your spiritual gifts, talents and personality. You will be equipped to serve and connect in and through our community.



Register now at
plattewoodschurch.org/connect

Special Needs Ministry

The Pure Joy Special Needs Ministry would like to invite you to participate or volunteer! Pure Joy meets for a small group on Sunday mornings at 9:15 am. We will soon offer a Wednesday evening opportunity. Please contact Penny Beeler, Pure Joy coordinator (682-9034 or onecentbeeler@gmail.com) for more information and to volunteer.



All women are invited to a day of refreshing, fellowship, worship and inspiring messages. Come enjoy an uplifting special day designed especially for you. More information is available at plattewoodschurch.org/women.

Catered luncheon provided
Childcare is provided with a reservation.
Friends are welcome!

Saturday, October 21
Check in, fellowship,
muffins and coffee at 8:30
9:00 a.m.-3:00 p.m.

Registration is now open!
plattewoodschurch.org/women
Flyers at the Connect Desk

Pub Theology

Pub Theology is an informal discussion group that meets on Monday evenings at the Peanut in the Picture Hills Shopping Center at 7 pm. For more information contact Stan Shipman (stanshipman@prodigy.net).



Trunk 'r Treat

Oct. 29, 4:00-5:30
Plaza Middle School

Join us for our annual Trunk 'r Treat for children through 5th grade. There will be games, face painting and drawings. Come in costume and be ready for some fun! Invite your friends!

TRUNK HOSTS NEEDED! We need everybody at Platte Woods UMC to make Trunk 'r Treat an event the children won't forget. To register to host a trunk, please contact Jen Bruce (jbruce@plattewoodschurch.org).

CANDY DONATIONS NEEDED: If you cannot host a table at the Trunk 'r Treat event, candy donation is the next best thing. In case our trunk sponsors run out of candy, we want to have plenty of backup. Please drop off individually wrapped candy or treats in the black baskets marked "Trunk 'r Treat" located near the windows overlooking the gym.

TRUNK 'r TREAT SO OTHERS CAN EAT! The children of Platte Woods UMC will collect canned goods for SPEAC the weekend of October 28 & 29 during services, as well as at the Trunk 'r Treat event. If you want to help contribute to this worthy cause, please bring your canned goods and place them in the black baskets marked "Trunk 'r Treat" located near the gym overlook windows.



Weekend Services

Saturday Night Chapel-5 p.m.
Traditional Service-8:00 a.m.
Praise Service-9:15 a.m.
Modern Service-10:45 a.m.



Pickle Ball



Now is the time to sign up if you have not started to play this large motor game. It is a HEALTHY workout and most of all it is in air conditioning!

Join us in the gym on Tuesdays, 3:15 to 5:15. Pickle ball is just plain fun! Contact Roger Smart at rogersmart553@gmail.com to learn more.

Bridge

Bridge is on Monday nights from 5-7 pm in room 257. This group welcomes all ages. Come and join

the fun! The group is growing in numbers and in laughter. Experience is appreciated.



BOX TOPS for Education

Please help our local schools by collecting BOX TOPS for Education. You will find these labels on common foods and supplies. Please cut out the BOX TOP and bring them to Anne Bartholow. She will disperse them. Each label brought in is 10 cents for a local school. This is a great way to give back to our community and support our schools. They do expire, so make sure to bring them in as soon as you can. You can also bring in Campbell Soup labels to be distributed. A big thank you to all of you that have brought in your labels!

